



MATTHEW JAMES

Property Services



Plot 90 The Watchmakers, Isadora Lea,, Coventry, CV3 1JH

£323,495

'THE ELLERTON DESIGN'... MASTER EN-SUITE... THREE BEDROOMS... TWO PARKING SPACES... BRAND NEW BUILD... OPEN PLAN KITCHEN DINING ROOM... TEN YEAR WARRANTY... SOUGHT AFTER 'THE WATCHMAKERS' DEVELOPMENT... CHOOSE YOUR OWN FIXTURES & FITTINGS*... Welcome to this stunning semi-detached house located on 'The Watchmakers' development in Binley, Coventry. This beautiful brand new build offers a modern and comfortable living experience, perfect for families or professionals seeking a new stylish home. Being an ECO home, energy efficiency is a key feature of this property, equipped with solar panels, water waste and heat flue recovery systems and argon-filled double glazing, which not only helps to reduce energy bills but also contributes to a more sustainable lifestyle. Additionally, the property includes an electric vehicle charging point, catering to the needs of modern living.

The property boasts three good sized bedrooms, including a master en-suite shower. The spacious kitchen dining room is ideal for entertaining guests or enjoying family meals together whilst the inviting reception room provides a lovely cosy retreat. With a further family bathroom, this home is designed to accommodate the needs of a busy household. The ground floor cloakroom adds an extra layer of convenience for both residents and visitors alike. Outside, you will find two dedicated parking spaces, a valuable asset in this sought-after development. The location is superb, with easy access to local amenities and main bus routes, making commuting and daily errands a breeze.

With a 10-year NHBC warranty, you can have peace of mind knowing that this home is built to the highest standards. This property is a fantastic opportunity for those looking to settle in a vibrant community with a variety of property types available. Don't miss your chance to make this beautiful house your new home.

Front Garden



Entrance Hallway

Lounge

13'0 x 11'10 (3.96m x 3.61m)



Groundfloor WC

5'6 x 3'4 (1.68m x 1.02m)

Kitchen / Dining

15'1 x 10'0 (4.60m x 3.05m)



First Floor Landing

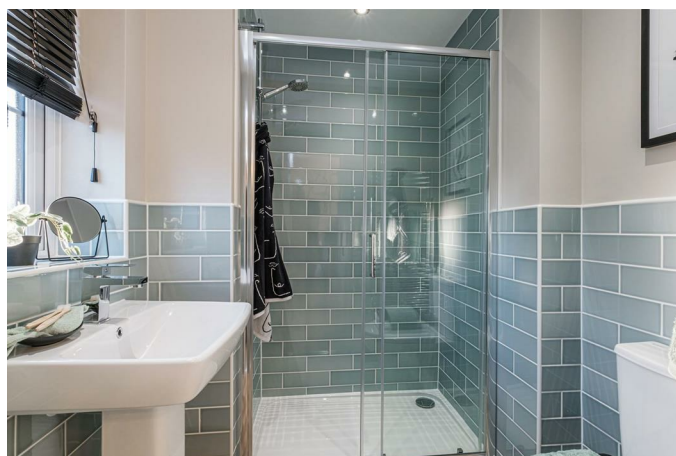
Bedroom One

12'1 x 11'10 (3.68m x 3.61m)



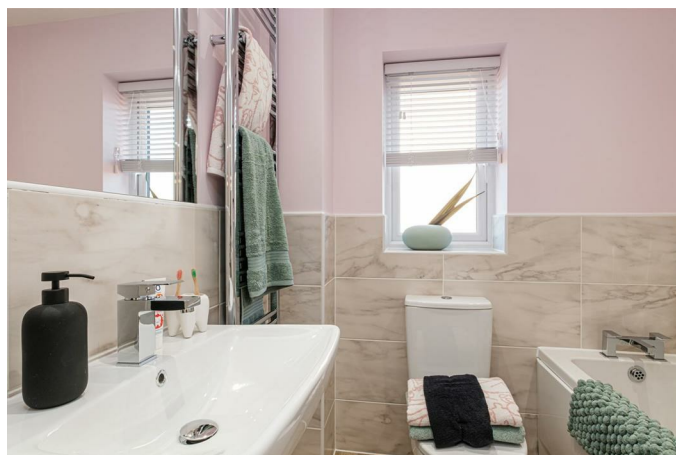
Master En-Suite

6'3 x 5'8 (1.91m x 1.73m)



Bathroom

6'3 x 5'7 (1.91m x 1.70m)



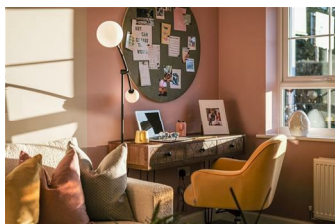
Bedroom Two

10'8 x 8'11 (3.25m x 2.72m)



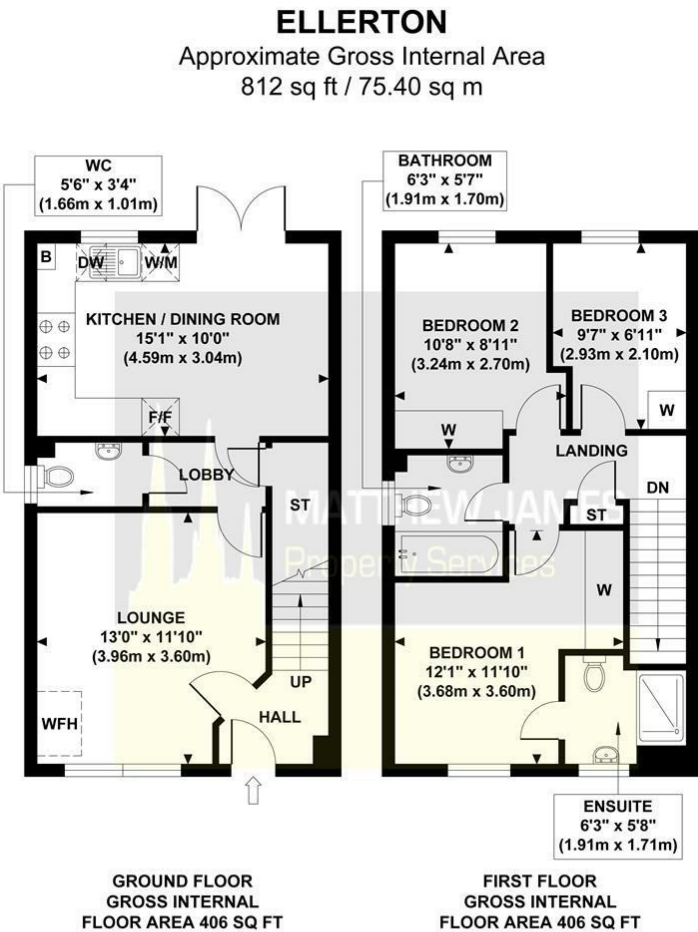
Bedroom Three

9'7 x 6'11 (2.92m x 2.11m)



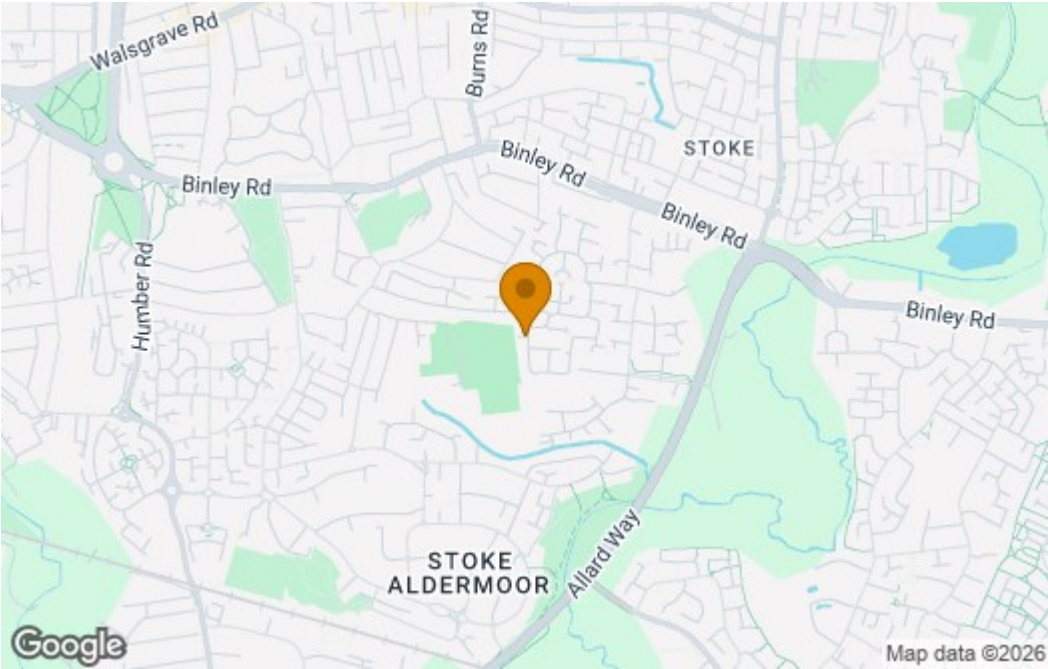
Rear Garden

Floor Plan

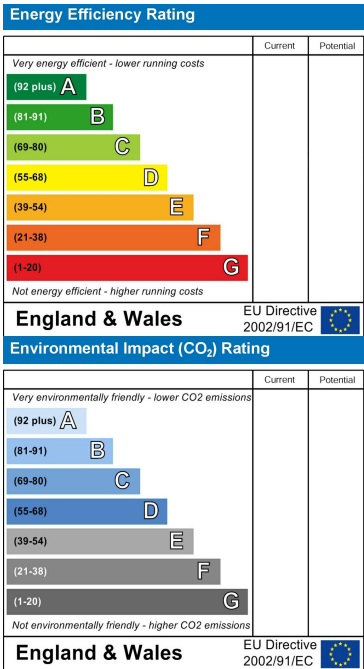


Although every attempt has been made to ensure accuracy, all measurements are approximate and no responsibility is taken for any error, omission, or mid-statement. This floor plan is for illustrative purposes only and not to scale. Measured in accordance to RICS standards.

Area Map



Energy Efficiency Graph



These particulars, whilst believed to be accurate are set out as a general outline only for guidance and do not constitute any part of an offer or contract. Intending purchasers should not rely on them as statements of representation of fact, but must satisfy themselves by inspection or otherwise as to their accuracy. No person in this firm's employment has the authority to make or give any representation or warranty in respect of the property.

CONTACT INFORMATION

24a Warwick Row, Coventry CV1 1EY
02477 170170

info@matthewjames.uk.com
www.matthewjames.uk.com

Facebook
Twitter